

Book: 29
Page: 45

CENTER POINTE COMMONS

DATE OF PREPARATION: OCTOBER 2017 NUMBER OF LOTS: 2 ACREAGE: 3.8540 ACRES



EXHIBIT "A"

DEDICATION

[illegible]

BE AFFIXED AS ATTESIED BY
ADMINISTRATOR THEREUNTO
October 2, 1937

GREGORY K. WILKINSON, CITY ADMINISTRATOR
CITY OF YUMA, AN ARIZONA MUNICIPAL CORPORATION

ACKNOWLEDGEMENT

THIS INSTRUMENT WAS ACKNOWLEDGED BEFORE ME THIS 21st DAY OF August, 2017 BY GREGORY K. WILKINSON, CITY ADMINISTRATOR

NOTARY PUBLIC

MY COMMISSION WILL EXPIRE

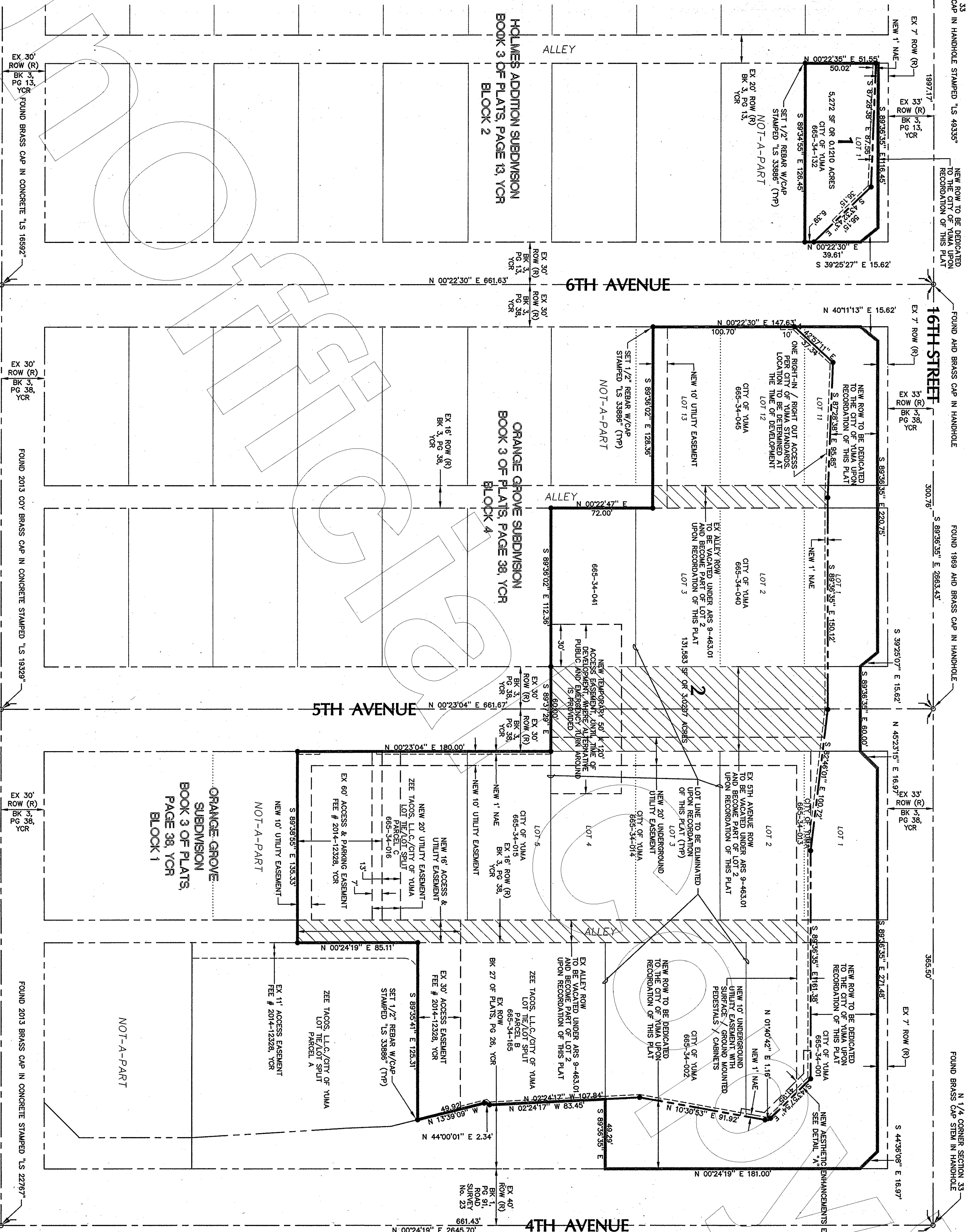
APPROVED

11.9.17
Dawnia G. Arnold
DEPARTMENT OF COMMUNITY DEVELOPMENT

CITY OF YUMA ENGINEER

STATE OF ARIZONA
COUNTY OF YUMA
THIS SUBDIVISION, AS SHOWN HEREON, HAS BEEN APPROVED BY THE MAYOR
AND CITY COUNCIL OF THE CITY OF YUMA, ON THIS 15TH DAY OF

MAJORITY ☒
 ATTEST: *[Signature]*
 CITY CLERK *[Signature]*



LEGEND

_____ CENTERLINE / SECTION LINE

 _____ PROPERTY LINE

 _____ RIGHT OF WAY LINE

 _____ EASEMENT LINE

 LOT LINE

 _____ PARCEL LINE

USER	UNITED STATES BUREAU OF RECLAMATION
AHD	ARIZONA HIGHWAY DEPARTMENT
APN	ASSESSOR'S PARCEL NUMBER
ROW	RIGHT OF WAY
(M)	MEASURED DATA
(R)	RECORDED DATA
BK	BOOK
PG	PAGE
YCR	YUMA COUNTY RECORDS
MAE	NON-ACCESS EASEMENT
○	EXISTING MONUMENT (TYPE AS SHOWN)
●	SET MONUMENT (TYPE AS SHOWN)
	EXISTING ROW TO BE VACATED

BASIS OF BEARINGS

BEARINGS ARE RELATIVE TO NAD 83 ARIZONA WEST STATE PLANE COORDINATE SYSTEM AS MEASURED BY GPS KINEMATIC SURVEY AS OBSERVED CONTROL POINTS. USCGS CONTROL POINTS "MISSION" AND "MARIN" WERE MEASURED AND USED AS REFERENCE POINTS FOR SURVEY

OWNER OF RECORD

CITY OF YUMA, AN ARIZONA MUNICIPAL CORPORATION
ONE CITY PLAZA
YUMA, AZ 85364

CURRENT ZONING

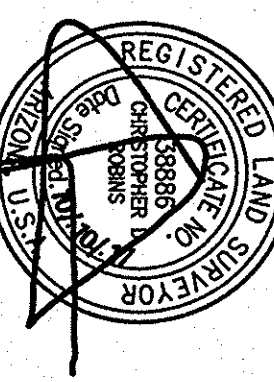
LOT 1	B-2 GENERAL COMMERCIAL DISTRICT
LOT 2	B-2 GENERAL COMMERCIAL DISTRICT

SURVEYOR'S NOTES

1. ALL NEW PROPERTY CORNERS TO BE SET 1/2" REBAR WITH CAP STAMPED "LS 38886"
2. ALL BEARINGS AND DISTANCES WITHOUT A RECORD OR MEASURED TAG ARE ASSUMED MEASURED.

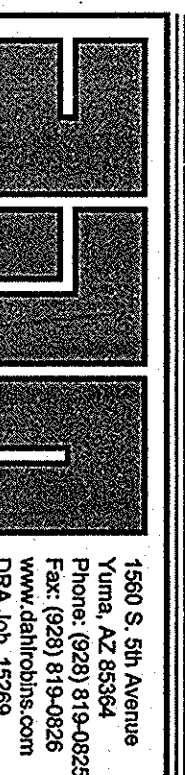
SURVEYOR'S CERTIFICATE

I HEREBY CERTIFY THAT THE LOT SPLIT AS SHOWN HEREON WAS MADE UNDER MY DIRECTION DURING OCTOBER 2017 AND THAT ALL REGULATIONS AND REQUIREMENTS OF THE SUBDIVISION REGULATIONS OF THE CITY OF YUMA HAVE BEEN MET



LAND SURVEYOR

Expires 3/31/20



DATE BOOKING & ACCOMMODATED INFO