

EXHIBIT A

LEGAL DESCRIPTION

Municipal Improvement District Area - 40th Street, 38th Street and Avenue B-1/2

That portion of the Southwest quarter of Section 7, Township 9 South, Range 23 West, Gila and Salt River Base and Meridian, Yuma County, Arizona more particularly described as follows:

BEGINNING at the South quarter corner of said Section 7;

Thence North 89°59'45" West along the South line of the Southwest quarter of said Section 7 a distance of 1,087.49 feet;

Thence North 00°13'24" East a distance of 40.00;

Thence South 89°59'45" East parallel with and 40.00 feet northerly of the South line of the Southwest quarter of said Section 7 a distance of 977.57 feet;

Thence North 45°10'31" East a distance of 56.74 feet;

Thence North 00°20'47" East parallel with and 70.00 feet westerly of the East line of the Southwest quarter of said Section 7 a distance of 170.00 feet;

Thence South 89°39'13" East a distance of 12.00 feet;

Thence North 00°20'47" East parallel with and 58.00 feet westerly of the East line of the Southwest quarter of said Section 7 a distance of 200.16 feet;

Thence North 44°42'55" West a distance of 35.32 feet;

Thence North 00°20'47" East a distance of 58.00 feet;

Thence North 45°17'05" East a distance of 35.39 feet;

Thence North 00°20'47" East parallel with and 58.00 feet westerly of the East line of the Southwest quarter of said Section 7 a distance of 679.50 feet;

Thence North 44°42'55" West a distance of 35.32 feet;

Thence North 89°46'36" West a distance of 177.00 feet;

Thence North 00°13'24" East a distance of 1.50 feet;

Thence North 89°46'36" West a distance of 271.19 feet;

Thence South 45°13'24" West a distance of 35.36;

Thence North 89°46'36" West a distance of 58.00 feet;

Thence North 44°46'36" West a distance of 35.36 feet;

Thence North 89°46'36" West a distance of 481.00 feet;

Thence North 00°13'24" East a distance of 62.50 feet;

Thence South 89°46'36" East a distance of 1,120.33 feet;

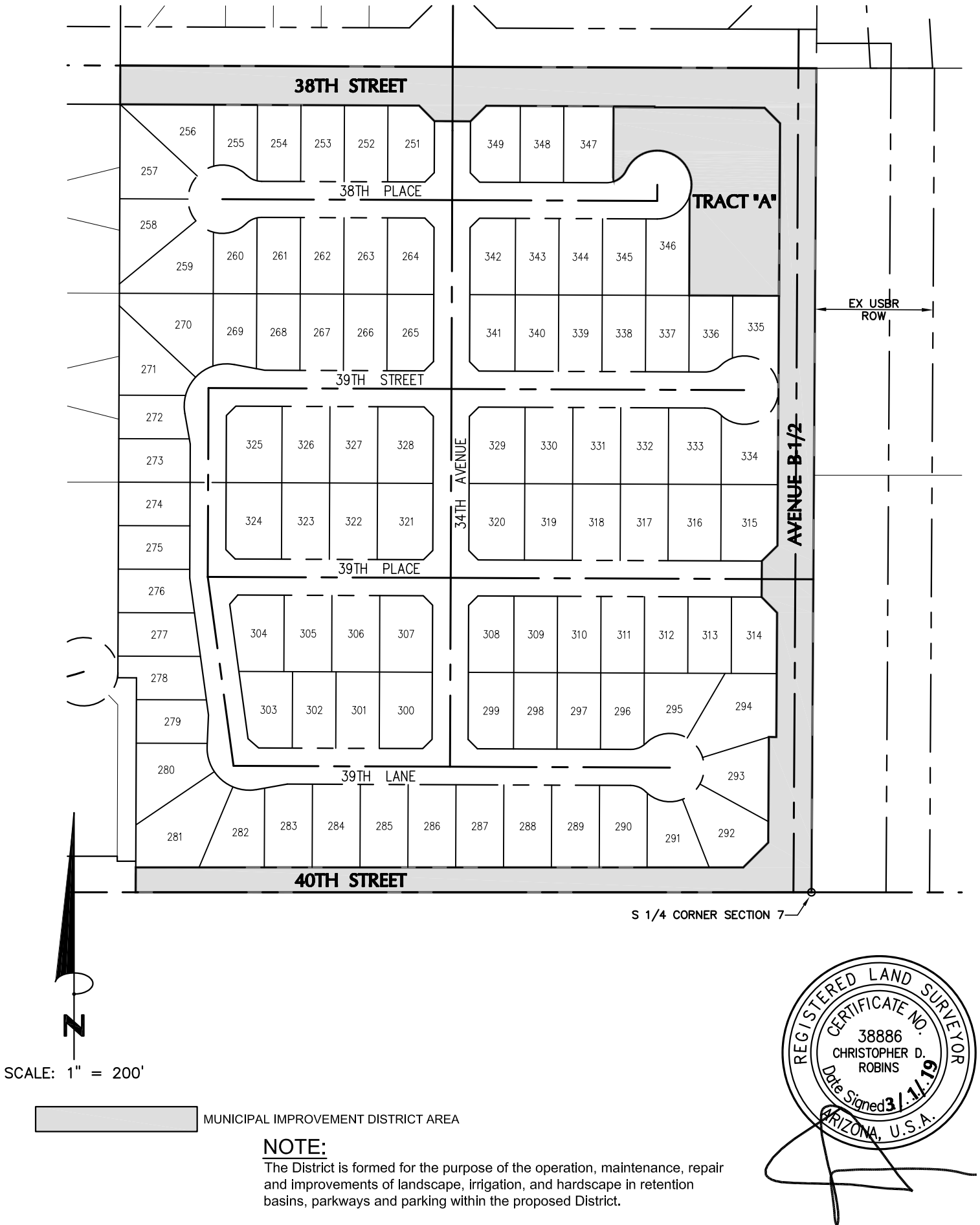
Thence South 00°20'47" West along the East line of the Southwest quarter of said Section 7
a distance of 1,326.37 feet to the point of BEGINNING;

Containing 4.4413 acres, more or less

Exhibit B

MUNICIPAL IMPROVEMENT DISTRICT - ASSESSMENT DIAGRAM

LIVINGSTON RANCH UNIT No. 2



MUNICIPAL IMPROVEMENT DISTRICT AREA

NOTE:

The District is formed for the purpose of the operation, maintenance, repair and improvements of landscape, irrigation, and hardscape in retention basins, parkways and parking within the proposed District.

